



# HOSHIZAKI

## CERTIFICATION



HACCP International



ISO9001



Compliant with IEC60335-2-89 Standard

## HF-188MC-SLD

### UPRIGHT LONG SOLID DOOR FREEZER



### Key Features



Lower running cost



Powerful cooling performance



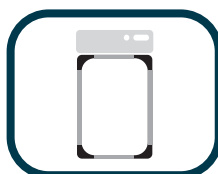
Self Closing Door



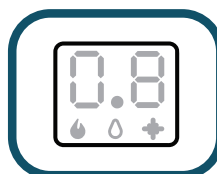
Removal door gaskets



Food Guard Shelf



Round Interior Corners



Large and clear display



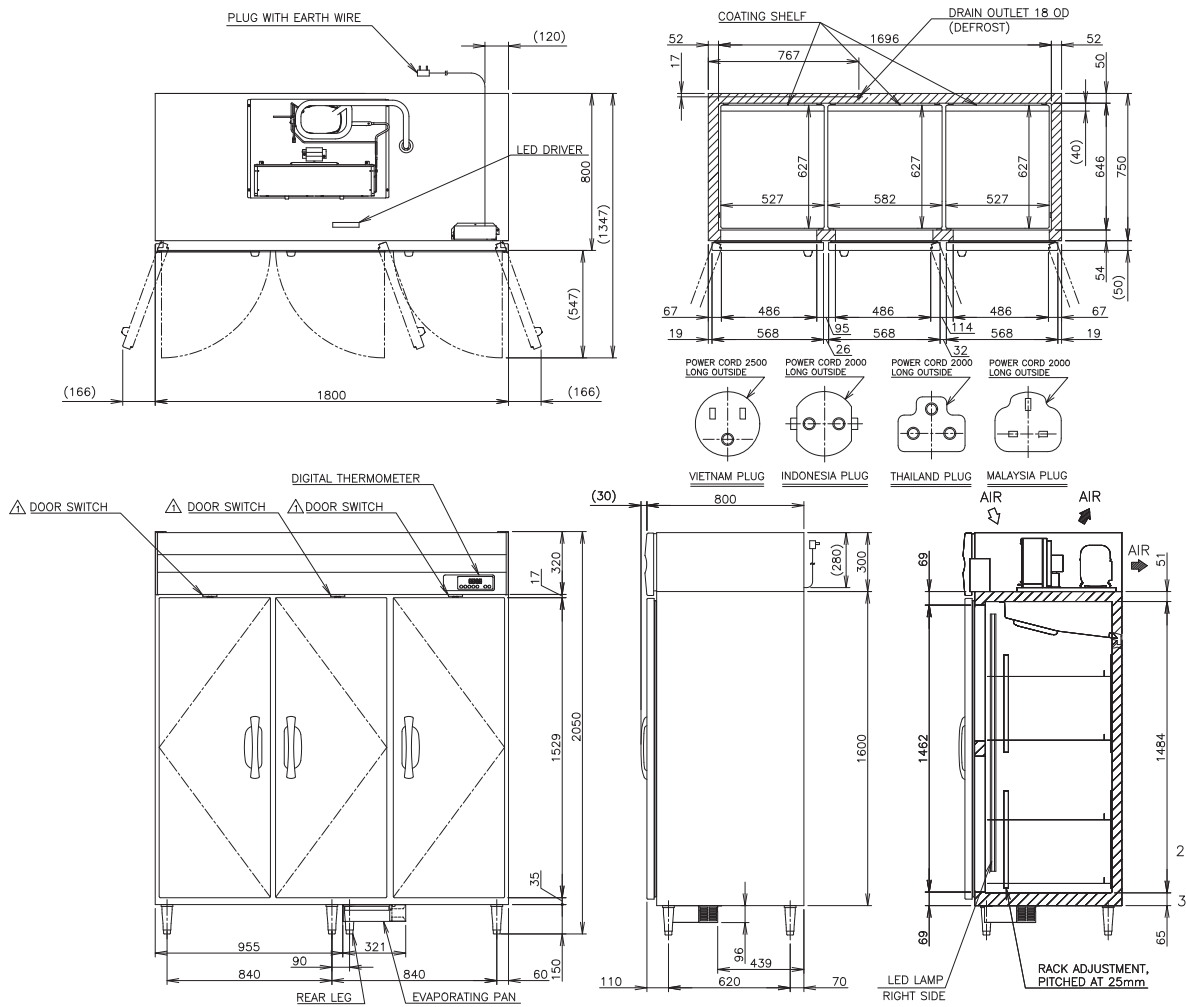
Drainage-Free Design



LED lighting



# Dimensions & Specifications



| MODEL                | HF-188MC-SLD  |
|----------------------|---|
| POWER SUPPLY         | 1 Phase 220-240V 50Hz Capacity: 1.19kVA (5.40A)                 |
| ELECTRIC CONSUMPTION | 764W  |
| TEMPERATURE CONTROL  | -25 to -7°C   |
| STORAGE CAPACITY     | 1656L   |
| WEIGHT               | Net: 186kg (Gross: Approx. 227kg)                               |
| OUTSIDE DIMENSIONS   | 1800mm(W)× 800mm(D)×2050(-2080)mm(H)                            |
| PACKAGE              | Carton(Wooden Pallet): 1860mm(W)×900mm(D)×2075mm(H)             |
| NUMBER OF SHELVES    | 12  |
| REFRIGERANT          | R290  |
| OPERATING CONDITIONS | Ambient Temperature: 5 - 38°C, Voltage Range: Rated Voltage ±6% |



# HOSHIZAKI

## HOSHIZAKI (THAILAND) LIMITED

No. 99 CP Tower North Park building 9th Floor, Zone D1 Soi Ngamwongwan 47 Intersection 42, Thung Song Hong Subdistrict, Lak Si District, Bangkok 10210 Thailand  
 TEL +66 2 005 9980 FAX +66 2 516 2646  
<https://hoshizaki-sea.com/>

